

## SIDEWALK MAINTENANCE PROGRAM

The City of St. Peters has approximately 488,470 lineal feet, or 92 miles, of sidewalks within its corporate limits. These sidewalks service both residential and commercial areas, and are most commonly constructed of concrete. Sidewalks provide safe and efficient movement for pedestrian traffic in the City of St. Peters. Walking is not only healthy due to the exercise it provides, it is also environmentally friendly. Furthermore, providing a stable path, which separates pedestrian traffic from vehicular traffic, improves the overall safety of city streets.

It is the policy of the City of St. Peters to ensure that its sidewalks are maintained in good condition. To this end, the City of St. Peters Public Works Services Group has initiated a sidewalk maintenance program to provide well-maintained, high quality sidewalks, at the lowest reasonable cost.

The City of St. Peters' Sidewalk Maintenance Program consists of two phases. Phase one consists of an annual survey of all sidewalks within the City of St. Peters corporate limits. To perform the survey, all the sidewalks in the city are broken in to segments, with boundaries generally between intersections. City streets with sidewalks on both sides contain two sidewalk segments. The sidewalks are inspected for one of eight defect types, which can impact the safety and/or aesthetics of the sidewalk. These defects are recorded, along with other information, which may aid in future project evaluation. The survey data is then inputted in to a computer database.

Below is a summary of the defect types recorded:



**Sidewalk with defect Type A**  
-Vertical edge of  $\frac{3}{4}$ " or more.



**Sidewalk with defect Type A at storm drain**  
-When the sidewalk rises, or lowers in respect to the drain, it can cause different types of defects, here type A.



**Sidewalk with defect Type B**

- Raised more than 3 inches in a 10-foot run.
- Depressed more than 3 inches in a 10-foot run.



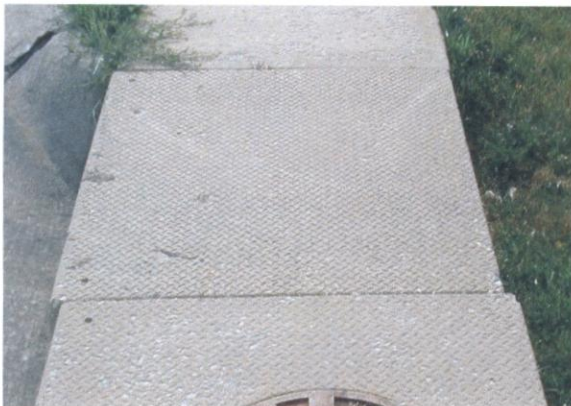
**Sidewalk with defect Type C**

- Has cracked into more than 2 pieces per square
- Cracks have horizontal separations equal to  $\frac{3}{4}$ " inch or more.



**Sidewalk with defect Type D**

- Sidewalk has spalled over 50% of the surface.



**Sidewalk with defect Type E**

- The sidewalk has horizontal separation of  $\frac{3}{4}$ " or more.



### **Sidewalk with defect Type F**

-The sidewalk has vegetation or debris covering 50% or more of the surface.



### **Sidewalk with Multiple Defects**

-Square exhibits more than one type of defect.  
(Type C & F shown)

Phase two of the sidewalk maintenance program involves the evaluation of the survey results and prioritizing of the possible repair projects. To ease the project evaluation process, as with city streets, all the sidewalk segments identified are rated on a scale of one to ten. The sidewalk rating assigned is based on the type and severity of the defect found. Priority is given to sidewalk segments with type A, type A with storm sewer inlets, and multiple defective squares. These types of defects pose the greatest risk to pedestrian and bicycle traffic. Therefore a sidewalk segment with multiple type A defects would have a lower sidewalk rating than a similar segment with multiple type E defects. The lower rating indicates a segment with a greater need for repair.

In addition to sidewalk repair, phase two of the sidewalk maintenance program includes the upgrading of existing sidewalks and accessible ramps to current Americans with Disability Act (ADA) standards. All accessible ramps located along roadways and sidewalks scheduled for repair are upgraded at that time..

With just over 92 miles of residential and commercial sidewalks to be maintained, it is important that a systematic approach be used to ensure the City of St. Peters' sidewalk and trail systems operate safely. The 2011 sidewalk maintenance program is currently funded to replace 800 sidewalk sections, or 20,000 square feet of concrete sidewalk. It is the goal of the sidewalk maintenance program to repair and maintain the City's sidewalks system so that it remains an asset to the community.