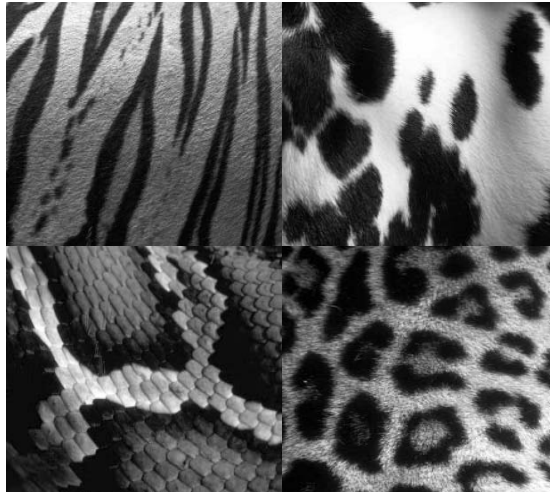
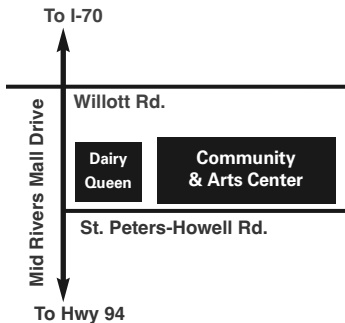


Featured Artists:
Nancy Young
Lisa Ober
Diana Saffo-Bono



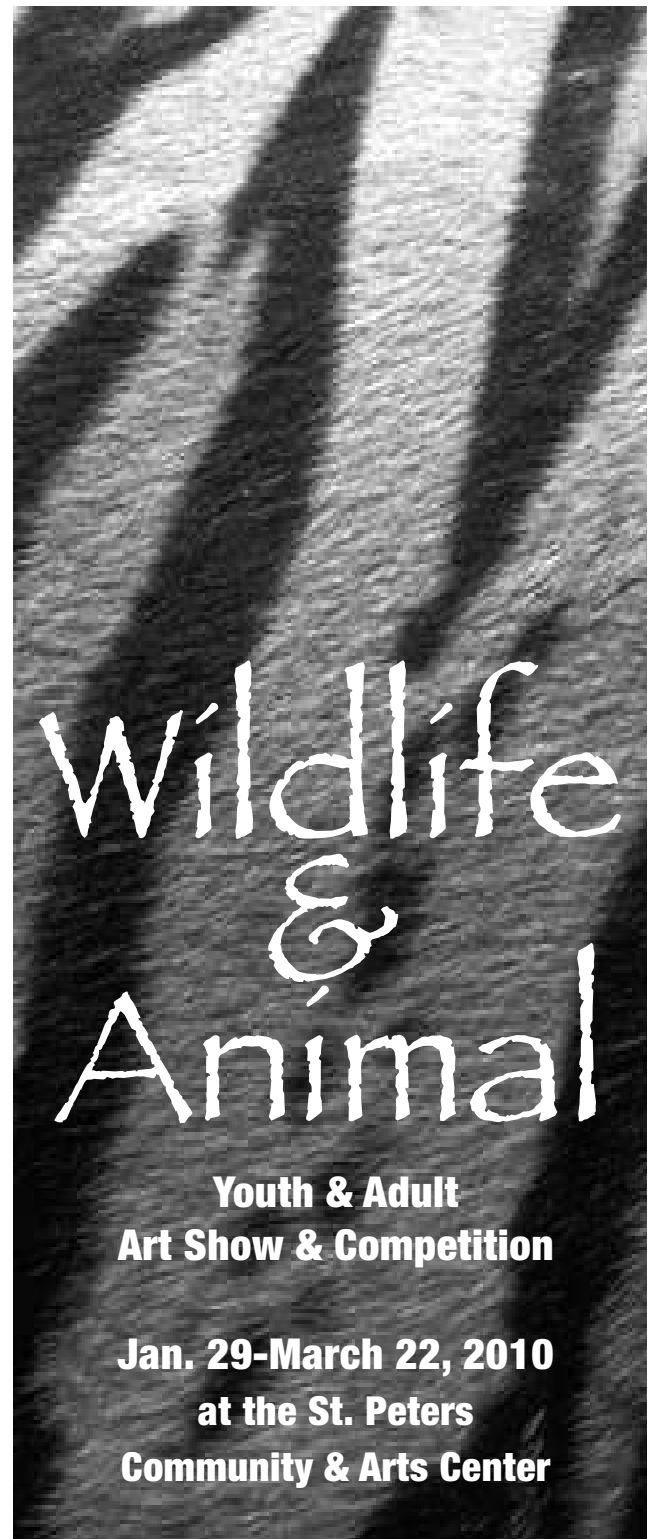
For more
information, please
call 636.397.6903.



The Community & Arts Center is located at 1035 St. Peters-Howell Road. From I-70 take the Mid-Rivers exit south 2 miles and turn left onto St. Peters Howell Road. Turn left into the second entrance on the left.

St. Peters Community & Arts Center
1035 St. Peters Howell Road
St. Peters, MO 63376
636.397.6903

Wildlife & Animal Art Show & Competition
Jan. 29-March 22, 2010 • St. Peters Community & Arts Center



Wildlife & Animal

Art Show & Competition

Jan. 29, 2009-March 22, 2010

Adult Categories:

Painting/Drawing

Photography

Mixed Media—includes sculpture, textiles, and recycled art

Youth Categories:

Elementary • Middle • High School

Accepted Artwork:

Submitted works must depict wildlife and/or animals.

Show is open to amateur and professional artists.

All accepted 2-dimensional works must be suitably framed, complete with hanging wire. Works on paper must be under glass or Plexiglass. Canvases are acceptable if edges are painted. Originals, no giclées. All works must remain on display during the full length of the exhibition. Works must have been completed within the last 3 years. No nudes allowed. We reserve the right to jury work for content and/or theme. We reserve the right to combine/limit awards in the event of lack of entries in categories.

Commissions:

Sales are encouraged. The St. Peters Community & Arts Center retains a 25% commission on any work sold during the exhibition. Entrants selling work must submit a W-9 for the Center.

Eligibility:

Any area artist—amateur & professional. Submitted art must depict wildlife and/or animals.

Adult Entry Fee:

Art Center Members/\$15 for up to four pieces.

Non-members/\$20 for up to three pieces.

Works by professional and amateur artists will be judged together.

Youth Entry Fee:

\$5 per piece

Receiving Dates:

Tuesday, Jan. 26, 9 a.m.-8:30 p.m.

Reception:

Friday, Jan. 29 • 6-8 p.m.

Awards*:

The following monetary and/or gift awards will be presented in the Adult category:

1st Place, \$50*

2nd Place, \$25

3rd Place, \$15

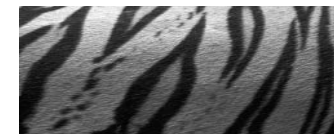
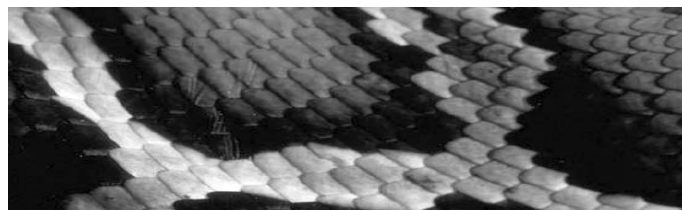
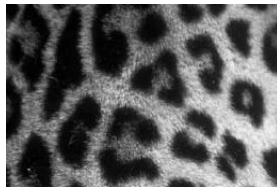
Honorable Mention ribbon

Best of Show \$100

The following ribbons will be presented in the Youth Elementary, Middle and High School categories:

1st Place*, 2nd Place, 3rd Place and Honorable Mention

*Any piece having ever won First Place in a Community & Art Center-sponsored show is not eligible for competition, but may be accepted for exhibition only. We reserve the right to combine/limit awards in the event of lack of entries in categories.



St. Peters Community & Art Center Hours:

Mon.-Thurs.—9 a.m.-9 p.m.

Fri.—9 a.m.-6 p.m.

Sat.—9 a.m.-4 p.m. • Closed Sunday

This exhibit supported by the
Missouri Arts Council.

MAC
MISSOURI ARTS COUNCIL